



LA INDUSTRIA DE LA CERRAJERÍA

Electric contact cylinders 514

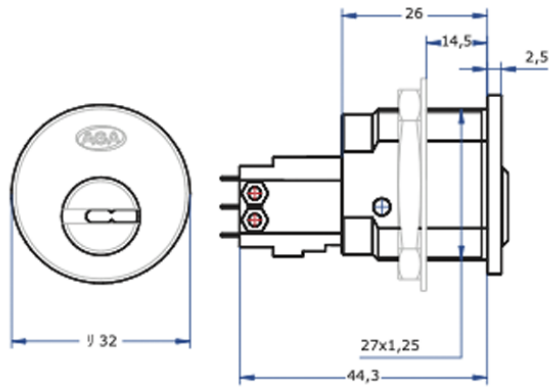
Descripción

CYLINDERS AND LOCKS _ Cylinder for doors with thicknesses of up to 14,5 mm with 1 or 2 microphones. With the possibility of master keying, equalization, and grouping.

KEY TYPE	AGA-25
MATERIAL	Brass
FINISH	Chromium plated
FEATURES	No. of Combinations: 1600
	No. of Master Combinations: consult
	Weight (grs.): 152
ACCESORIES	M27x1.25 nut

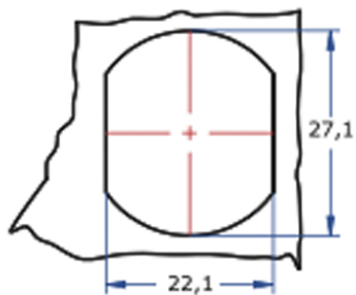
* AGA supplies as standard the cylinder in chrome finish, clockwise turn, a key outlet, with a micro and with two keys. *Other lengths available upon request.

Fotos



LA INDUSTRIA DE LA CERRAJERÍA

Dimensiones del orificio



<p>REF. 514 1</p> <p>GIRO 90° A LA DERECHA Salida de llave a las 3</p> <p>1 Micro</p>	<p>REF. 514 2</p> <p>GIRO 90° A LA DERECHA Salida de llave a las 3</p> <p>2 Micros</p>
<p>REF. 514 3</p> <p>GIRO 90° A LA DERECHA Salida de llave a las 3</p> <p>1 Micro y Retorno</p>	<p>REF. 514 4</p> <p>GIRO 45° DCHA. + 45° IZDA. Salida de llave a las 1 y a las 5</p> <p>1 Micro</p>



LA INDUSTRIA DE LA CERRAJERIA