



LA INDUSTRIA DE LA CERRAJERÍA

Pushbutton Lock 351

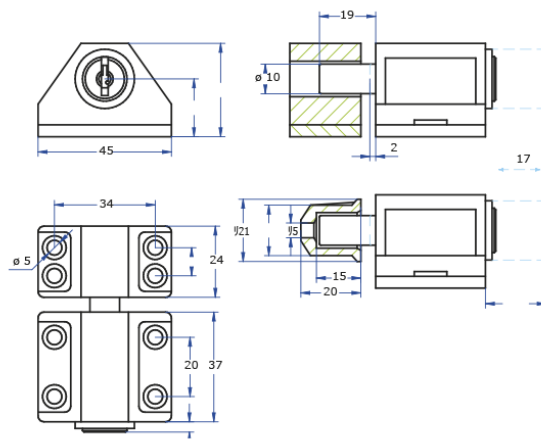
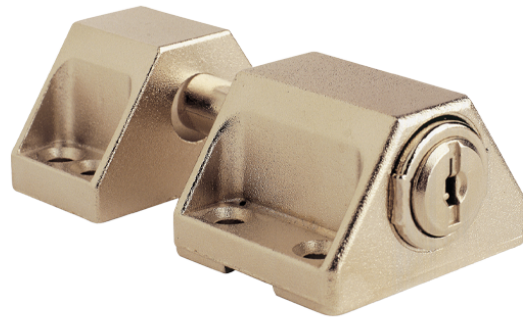
Descripción

CYLINDERS AND LOCKS _ Sliding doors blocking pushbutton lock. Same code locks (KA) groups options available.

KEY TYPE	Serie 500/900 (Standard)
MATERIAL	Zamak
FINISH	Chromium plated
	Brass plating
	White
	Black
	Brown
FEATURES	No. of Combinations: 208
	Weight (g): 304
ACCESORIES	Fastener
	Wood Thimble
	Lashing coach screw

*AGA supplies as standard this model chromium plated with key removable at one position and 2 keys.

Fotos



LA INDUSTRIA DE LA CERRAJERÍA