



LA INDUSTRIA DE LA CERRAJERÍA

546 Intended Key Lock

Descripción

[bws_pdfprint display='pdf'] Double intervention lock for safe deposit boxes with 10,5mm bolt throw. This lock allows the change of renter cylinder.

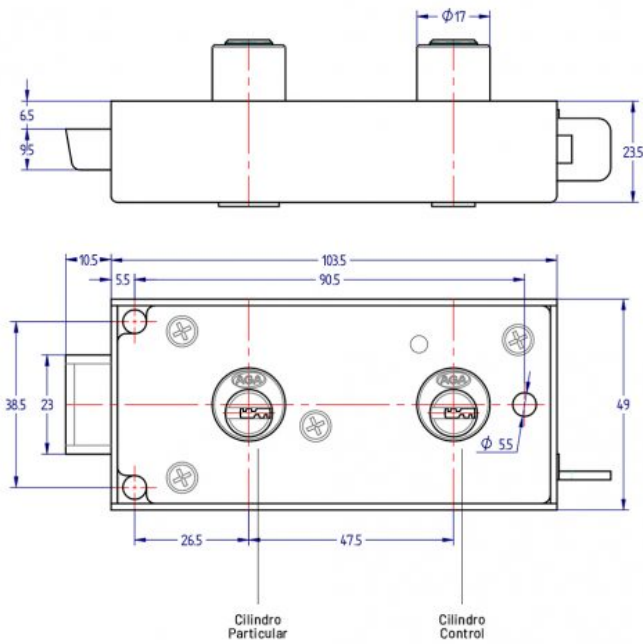
- AGA supplies as standard the lock with 2 keys (AGA-48) for the renter cylinder and without a control key.
- Optional with exclusive profile key (AGA-37).

Instructions:

- The control key gives way.
- The particular key opens the lock.
- The particular key closes the lock.
- The control key is removed

TYPE OF KEY	AGA-48
Nº OF COMBINATIONS (GUARD)	200
Nº OF COMBINATIONS (RENTER)	1000
FINISH	ZINC PLATED
WEIGHT (grs.)	450

Fotos



LA INDUSTRIA DE LA CERRAJERÍA