



LA INDUSTRIA DE LA CERRAJERÍA

236 Lock Class "A"

Descripción

[bws_pdfprint display='pdf'] Certified lock according to standard EN 1300, class A with 11mm of movement of the lever. It is a changeable code key lock which allows the lock to be adapted to a new key code by means of a simple manoeuver.

- AGA supplies as standard the lock without key.
- Zinc plated and tempered steel covered.
- Prepared for cable mounting which is joined to the vault bolt (256, 257).
- Different key lengths supplied on request.
- Lock with key guide (2900) available fixed in the cover plate.
- Assembly with chip operated by the lever, without disassembling the lock.

TYPE OF LOCK	MECHANICAL
LOCK SYSTEM	BLOCKING
Nº OF COMBINATIONS	190.000
POSSIBILITY OF MASTERKEY	NO
FINISH	ZINC PLATED
WEIGHT (grs.)	630
CERTIFICATES	VdS (Germany)

Operation:

- Open the lock.

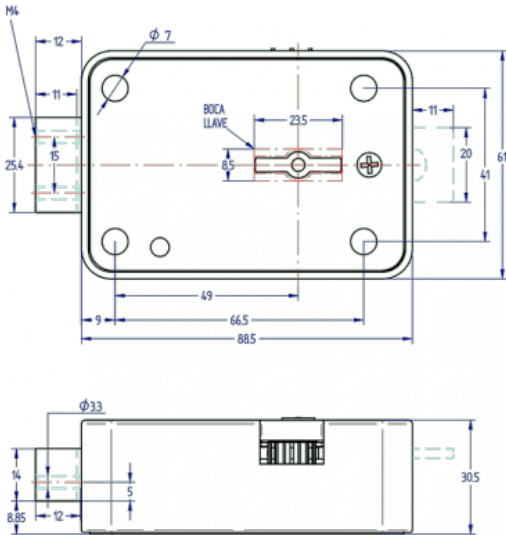
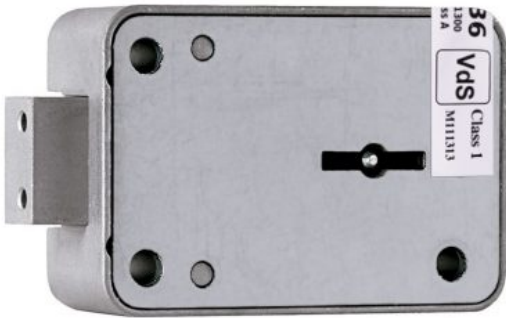
- Close the lock until mild-career.
- Slide the unit of code change.
- Open the lock.
- Remove the key.
- Insert the new code key.
- Close the lock.
- The lock has been programmed with the new code.

INSTALLATION POSITIONS:



LA INDUSTRIA DE LA CERRAJERÍA

Fotos



LA INDUSTRIA DE LA CERRAJERÍA