



LA INDUSTRIA DE LA CERRAJERÍA

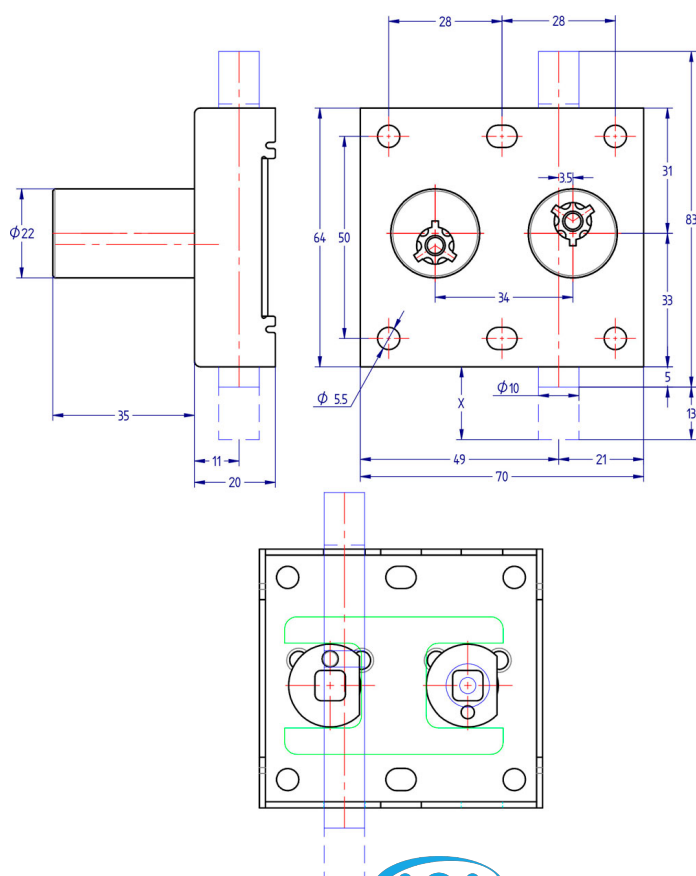
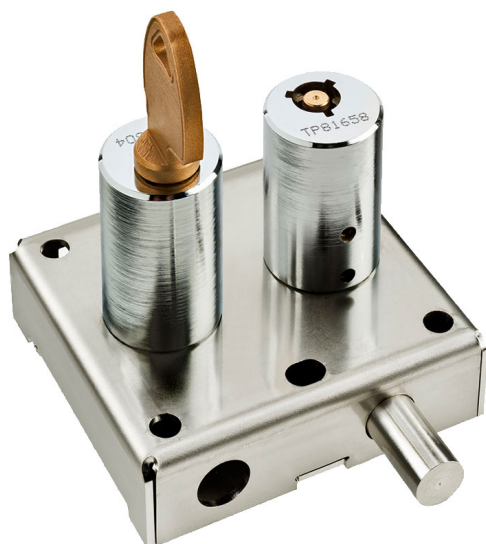
7226 Bolt Lock, Borobil Series

Descripción

Lock for double manoeuvre, encoded to combine with other safety locks. Bolt works in both positions, extended and retracted. Key is free when bolt is extended. When bolt is retracted, key is trapped and the mechanism is locked. To start the sequence in standard manoeuvre, the key in the second lock has to be trapped.

MANOEUVRE		BOLT		CODE
	LENGHT	THROW	THREAD	
STANDARD	18	13	NO	UT7226I001

Fotos



LA INDUSTRIA DE LA CERRAJERÍA