



LA INDUSTRIA DE LA CERRAJERÍA

Laua series access locking 1329

Descripción

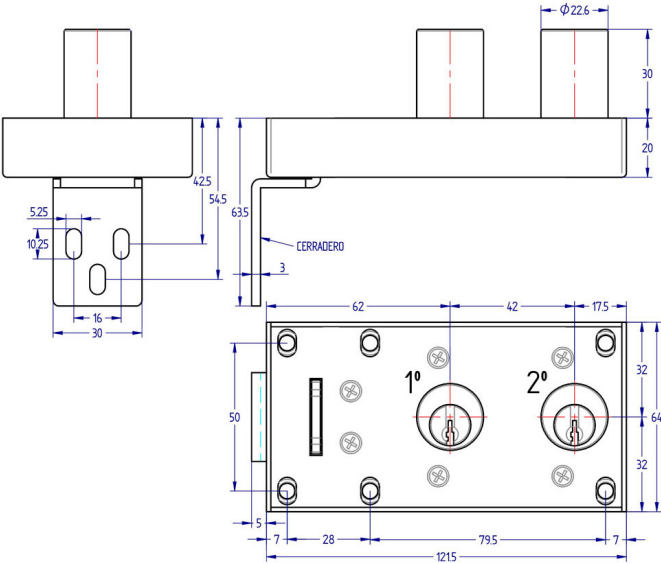
Lock for access to a cell. Encoded to combine with other safety locks When the door is open, the key is trapped. To start the sequence in standard manoeuvre, the key in the second and in the third locks have to be trapped.

| MANOEUVRE | CYLINDER DIMENSION | CODE |
|-----------|--------------------|------------|
| STANDARD | Ø23x30 | UP1329I000 |

STANDARD MANOEUVRE

| | |
|--|--|
| | |
|--|--|

Fotos



LA INDUSTRIA DE LA CERRAJERÍA