



LA INDUSTRIA DE LA CERRAJERÍA

Quarter Turn for Padlock M20 391

Descripción

LOCKING SYSTEM

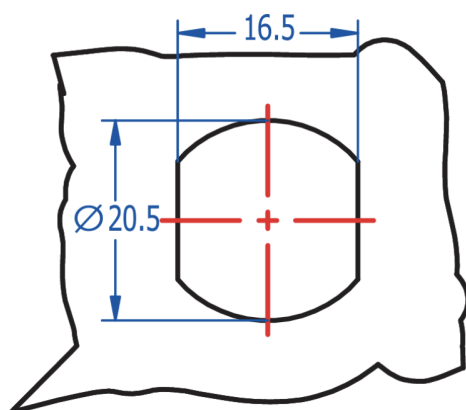
Quarter turn latches for padlock. The diameter for padlock shackle may be 5mm. Used in cabinets where the user changes, or to avoid access to unauthorised persons.

KEY FORM	Wing knob far padlock
MATERIAL	Zamak
FINISH	Chromium plated
FEATURES	D = 14mm / R = 9mm / L = 19,5mm D = 19mm / R = 14mm / L = 19,5mm
WEIGHT(gr)	128
Locking direction	180°Right / Left
ACCESORIES	M20 Nuts, M20 metallic washer, Lock washer

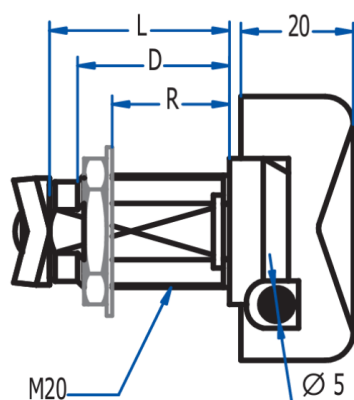
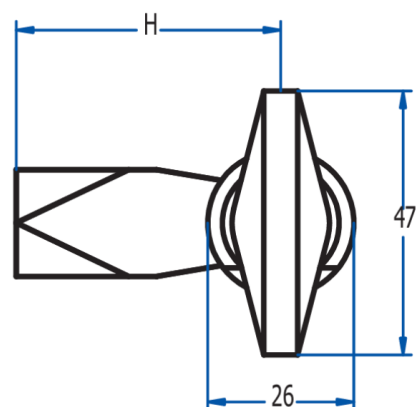
Fotos



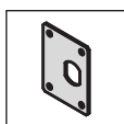
Dimensiones del orificio



LA INDUSTRIA DE LA CERRAJERÍA



Otros Accesorios:

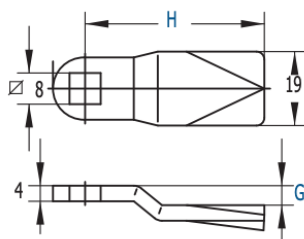


Placa anti-giro
Accesorios: página 63.



LA INDUSTRIA DE LA CERRAJERÍA

LENGÜETAS								
Z	Z150	Z151	Z152	Z153	Z157	Z158	Z159	Z160
H	47	52	57	62	47	47	47	47
G	-	-	-	-	5	10	15	20



LA INDUSTRIA DE LA CERRAJERÍA