



LA INDUSTRIA DE LA CERRAJERÍA

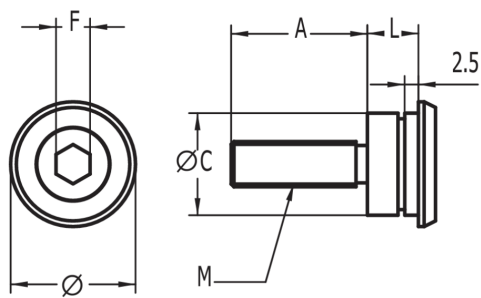
Various Lock Captive Screw 198G

Descripción

Captive screw for cabinet doors and side panels. The screw is fixed in the door with a circlip. AGA supplies as standard A=25mm. Further measurements upon request.

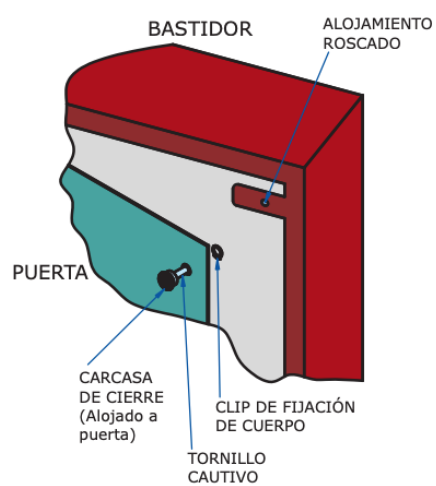
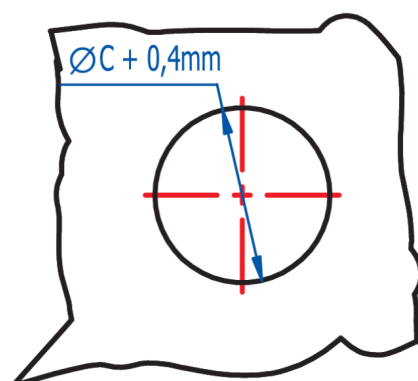
KEY FORM	F= Hexagon de 5 mm
MATERIAL	Captive screw in steel, Brass body
FINISH	Nickel-plated
SCREW	M8 screw (M)
FEATURES	A = 25 mm A = 45 mm A = 55 mm
DIAMETER	Ø 22 mm / L = 9 mm / Ø C = 18 mm
WEIGHT(grs)	32
LOCKING DIRECTION	90° Left / 90° Right
ACCESORIES	Circlip 17 DIN-471 E
KEY	03016HM

Fotos



LA INDUSTRIA DE LA CERRAJERÍA

Dimensiones del orificio



LA INDUSTRIA DE LA CERRAJERÍA