



LA INDUSTRIA DE LA CERRAJERÍA

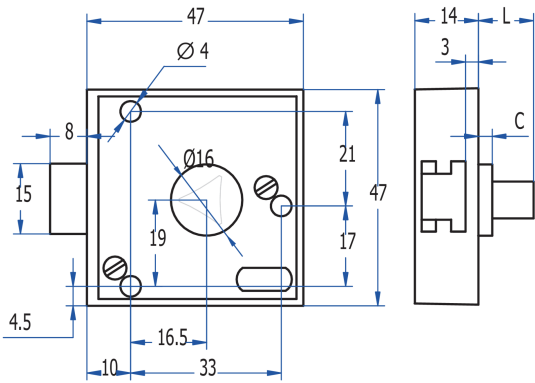
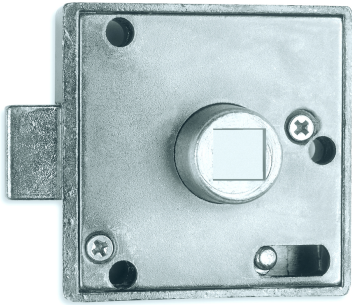
Various Superimposing Pin Push 596

Descripción

Superimposing pin push latch that could be used for different door thickness. The door is closed by pushing it, it is not necessary to use the key.

| | |
|-------------|-----------------------|
| KEY FORM | Square 8 mm. Female |
| MATERIAL | Zamak |
| FINISH | Zinc plated |
| FEATURES | L = 11 mm / C = 11 mm |
| WEIGHT(grs) | 118 |
| ACCESORIES | - |
| KEY | 03018CM |

Fotos



LA INDUSTRIA DE LA CERRAJERÍA