



LA INDUSTRIA DE LA CERRAJERÍA

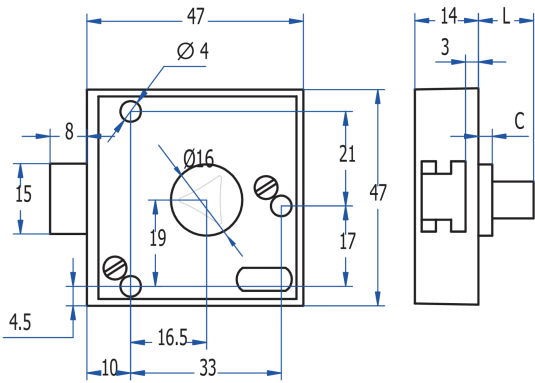
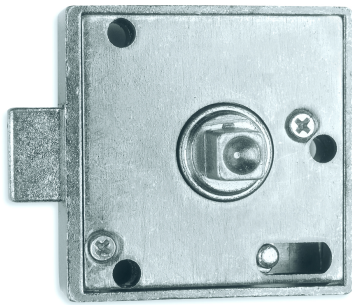
Various Superimposing Pin Push 597

Descripción

Superimposing pin push latch that could be used for different door thickness. The door is closed by pushing it, it is not necessary to use the key.

KEY FORM	Square 8 mm
MATERIAL	Zamak
FINISH	Zinc plated
FEATURES	L = 12 mm / C = 1 mm
WEIGHT(grs)	110
ACCESORIES	-
KEY	03018C

Fotos



LA INDUSTRIA DE LA CERRAJERÍA