

**SYSTEMS AND SOLUTIONS**  
FOR THE ENERGY TRANSFORMATION INDUSTRY  
**SAFETY INTERLOCKS**



**Sectorial Catalogue**  
english edition 51



LOCKSMITH INDUSTRY



LOCKSMITH INDUSTRY

## **Sectorial Catalogue**

# **LOCKING SYSTEMS**

**Elements designed and developed to lock industrial equipment and devices under the standards of quality ISO 9001:2015**

*Spanish leader in industrial lock manufacturing*

---

TALLERES AGA, S.A. • C/ Notario Etxagibel, 6 • 20500 Mondragón, Gipuzkoa. Spain  
Telf. 943 79 09 22 • Fax. 943 79 09 76  
**[www.aga.es](http://www.aga.es)**

# QUALITY

ALL OUR EFFORTS IS FOCUSSED ON THE INTEGRAL SATISFACTION OF THE CLIENT. THEREFORE, WE HAVE A QUALITY MANAGEMENT SYSTEM ACCORDING TO **ISO 9001** THAT GUARANTEES OUR MANUFACTURING AND SALE PROCESS.

SAFETY INTERLOCKS ARE SECURITY DEVICES THAT ARE APPLIED TO TWO OR MORE MOBILE PARTS PREVENTING OR ALLOWING THE MOVEMENT OF ONE WHEN THE OTHERS ARE LOCKED IN A PREDETERMINED POSITION. THIS ALLOWS ONLY DEFINED SECUENCES TO MAKE THE PROTECTION OF PERSONNEL AND FACILIES, SAFEGARDING AGAINST THE RISK OF ACCIDENTS OR ERRONEOUS MANOEUVRES.

## FEATURES

Locks made of easy machining materials such as brass and stainless steel, high quality AISI 303 and 304. Under the rules of **RohS**.

## ENVIRONMENTAL CONDITIONS

- **10 years of operation** under normal conditions referred to IEC 60947 / IEC 62271.
- **Salt spray:** ISO9227 / 240h (Test passed with 500h).
- **H2S-SO2 spray:** IEC600068-2-42 for SO2 and H2S IEC600068-2-43 / 21 days = 0.5 ppm °C, T° = + 25°C, Rel.Hum = 75%.
- **Vibrations:** IEC 60068-2-6 / 2-13.2 Hz / +/-1mm / 13.2-100Hz / 0,7g.
- **Condensation moist heat:** IEC60068-2-30 / 6 cycles (12h + 12h), T °: 25 °C / 55 °C, Rel Hum.. = 95% (test duration 6 days).
- **Cold Storage:** IEC 60068-2-1/-55°C / 16h.
- **Storage temperature range:** -55°C / +85°C.
- **Storage, dry heat:** IEC 60068-2-2 / 85°C / 16h.
- **Operating temperature range:** -25°C / +70°C.

## MECHANICAL OPERATING CONDITIONS

- **Loaded mechanical endurance:** 15.000 cycles with an opposite torque of 0,07Nm. With opposition 14daN, you can remove the key.
- **Resistant to torsion and funtion at high and low temperature:** >=6,5Nm in opposition to rotation and in a range of -5 °C / + 55 °C; Maximum angular deformation between the tongue and body support cylinder 5°30° / Maximum angular deformation between the tongue support and cylinder body after the test.
- **Resistant to key torsion:** 5 Nm. The head of the key breaks at 6,5 Nm and the lock continues to work.
- **Resistant to tongue on nuts:** M22x1,25 (body): 10Nm (breaks at 48Nm) / M17x1 (cam support): 2,5Nm (breaks at 9Nm).
- **IP Grade:** IP40 / IEC 60694 °5.13.1.
- **Mechanical / degree IK impacts:** IK08 / IEC 60694 °5.13.3 / IEC 62262/5 impacts of 5 Joules in direction of the axis 5 perpendicular to the axis vertically and 5 horizontally perpendicular to the axis direction.
- **Resistant to free fall:** 600-68-32-2 IEC / 1m high against the concrete floor / 3 falls in unfavorable positions and lock continues to operate.
- **Insertion and removal of key:** The key can be removed and inserted back even if a torque of 0,07Nm exist.
- **Mechanical resistance of locking bolt or latch:** IEC 609473 / Exerting 60daN against bolt-strike, neither lock box nor bolt – strike break.
- **Resistant to pulling force:** By exercising 14daN force, the cylinder is not separated from the lock box.

## OTHER CATALOGS

AGA serves a multi-sector market as a result of its high specialization achieved over the years and the development of multiple projects. Many of them today are part of the **large collection of articles** that we present in the different sectorial catalogs that we have.

- Catalogs:



## TOTAL FLEXIBILITY

There are many products offered in our catalogs, but there are many more specialized products that we make as well as our customised adaptations to our standard items. Notably...

- No tenemos pedido mínimo, lo cual le permite optimizar su compra.
- We have no minimum order, allowing you to optimize your purchase.
- We guarantee the replacement of any item and its components for 10 years after the withdrawal of the product.
- The ability to customize your items.
- Service “exclusive key” and “exclusive code” with AGA which ensures that only you have the program.

## CAM LOCKS



**10 LAUA series:** 1101, 1122, 1125.

**12 BOROBIL series:** 7101, 7125.

## LOCKS



**16 Bolt Locks:**

**16 LAUA series:** 1223, 1295, 1201, 1206, 1202, 1226, 1208, 1207, 1227.

**20 BOROBIL series:** 7223, 7295, 7201, 7206, 7202, 7226, 7208, 7207, 7227.

**25 Acces Locking:**

**25 LAUA series:** 1394, 1328, 1329, 1395.

**27 BOROBIL series:** 7394, 7328, 7329, 7365.

## KEY MANAGEMENT



**32 LAUA series:** 1403, 1406.

**33 BOROBIL series:** 7403, 7406.

## SOLENOID CONTROLLED LOCKS



**36 LAUA series:** 1500, 1501.

**36 BOROBIL series:** 7500, 7501.

## MISCELLANEOUS



**40 Miscellaneous:** 1601, 8228.

## KEYS



**44 LAUA series:** AGA 13, AGA 16.

**45 BOROBIL series:** AGA 7 T.





# CAM LOCKS

LAUA series  
BOROBIL series

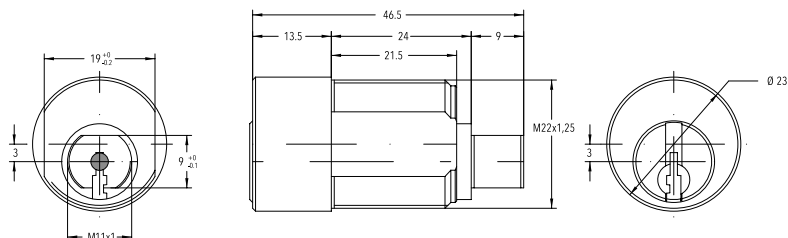


# 1125

## CAM LOCKS LAUA series

Key operated mechanical interlock, encoded to combine with other safety locks. Suitable for fitting a cam.

| ROTATION | CODE       |
|----------|------------|
| 90° D    | UP1125C9DO |
| 90° I    | UP1125C9DI |
| 180° D   | UP1125C1DO |
| 180° I   | UP1125C1IO |

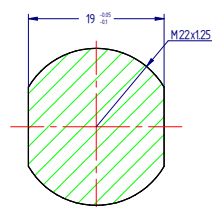
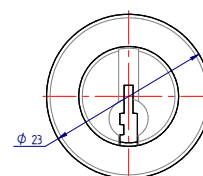
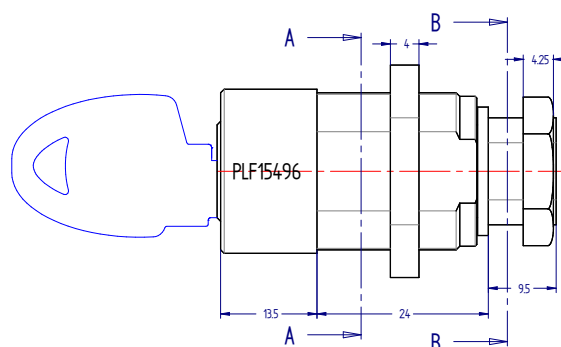


# 1122

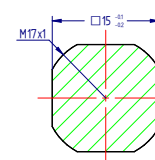
## CAM LOCKS LAUA series

Key operated mechanical interlock, CENTERED, encoded to combine with other safety locks. Suitable for fitting a cam.

| ROTATION | CODE       |
|----------|------------|
| 90° D    | UP1122C9D0 |
| 90° I    | UP1122C9I0 |



SECTION A-A



SECTION B-B

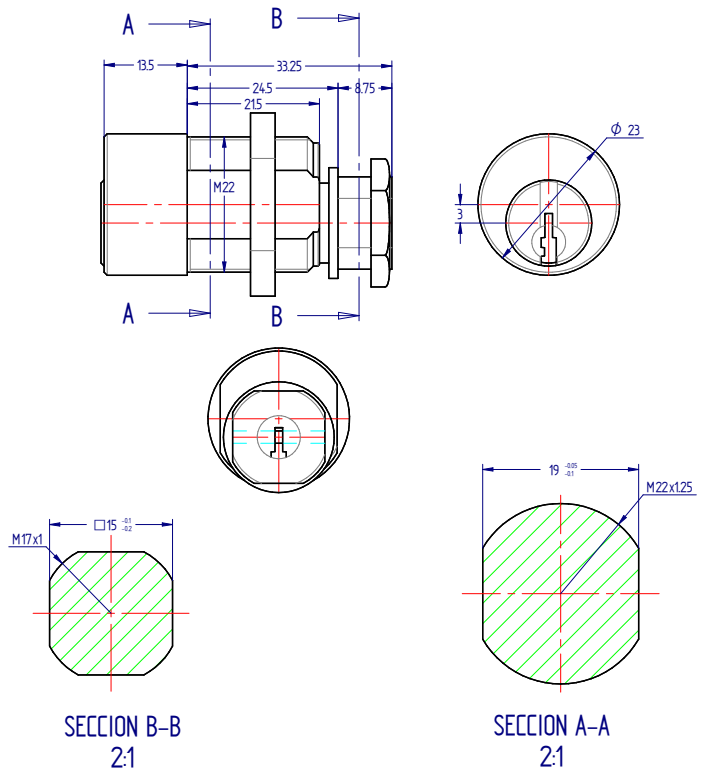


# 1101

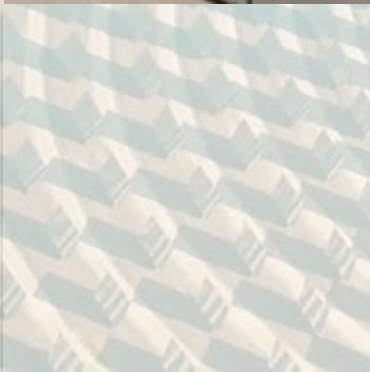
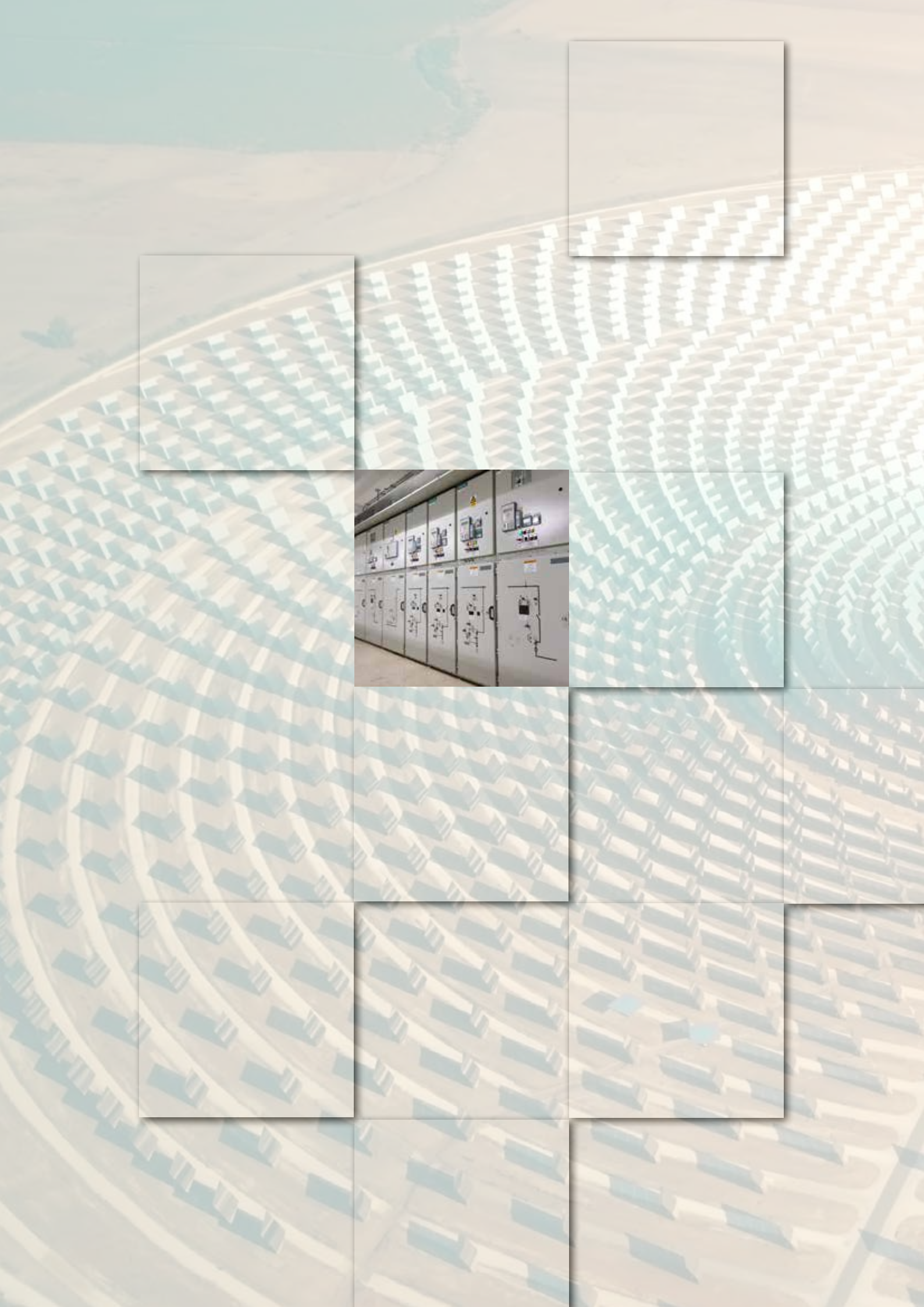
## CAM LOCKS *LAUA series*

Key operated mechanical interlock, encoded to combine with other safety locks. Suitable for fitting a cam.

| ROTATION | CODE       |
|----------|------------|
| 90° D    | UP1101C9D0 |
| 90° I    | UP1101C9I0 |









# LOCKS

Bolt Locks  
*LAUA series*  
*BOROBIL series*

Access Locking  
*LAUA series*  
*BOROBIL series*



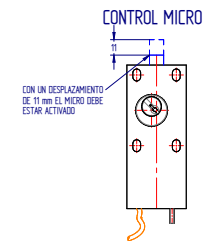




## BOLT LOCKS *LAUA series*



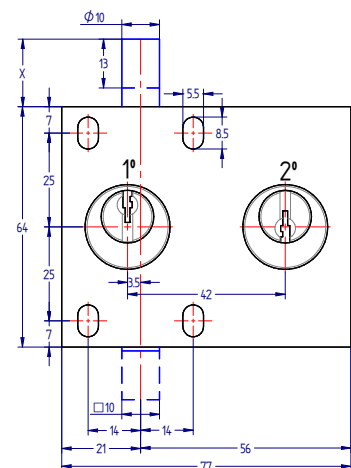
## STANDARD MANOEUVRE



## BOLT LOCKS *LAUA series*

A photograph of a mechanical device, likely a pressure transducer or sensor. It consists of a cylindrical body with a threaded top section. A horizontal output port or tube extends from the side. The device is mounted on a base plate.

## STANDARD MANOEUVRE



# 1202

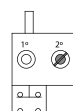
## BOLT LOCKS LAUA series

Lock for double manoeuvre, encoded to combine with other safety locks. Bolt works in both positions, extended and retracted. Key is free when bolt is extended. When bolt is retracted, key is trapped and the mechanism is locked. When bolt is retracted the switch is activated. To start the sequence in standard manoeuvre, the key in the second lock has to be trapped.



| MANOEUVRE | BOLT   |       |        | CODE       |
|-----------|--------|-------|--------|------------|
|           | LENGHT | THROW | THREAD |            |
| STANDARD  | 18     | 13    | NO     | UP1202IOF1 |

### STANDARD MANOEUVRE



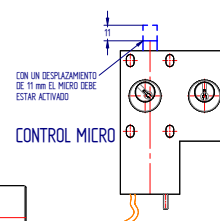
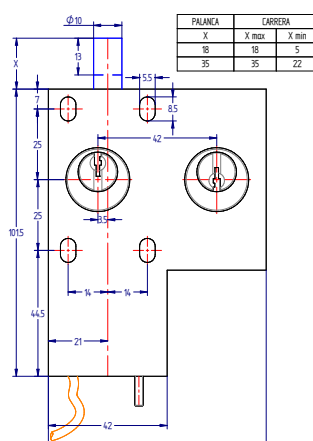
INITIAL POSITION  
Bolt extended  
Key n° 1 free  
Key n° 2 trapped



POSITION AFTER MANOEUVRE Bolt retracted  
Key n° 1 trapped  
Key n° 2 free

⊙ KEY FREE

⊗ KEY TRAPPED



# 1226

## BOLT LOCKS LAUA series

Lock for double manoeuvre, encoded to combine with other safety locks. Bolt works in both positions, extended and retracted. Key is free when bolt is extended. When bolt is retracted, key is trapped and the mechanism is locked. To start the sequence in standard manoeuvre, the key in the second lock has to be trapped.



| MANOEUVRE | BOLT   |       |        | CODE       |
|-----------|--------|-------|--------|------------|
|           | LENGHT | THROW | THREAD |            |
| STANDARD  | 18     | 13    | NO     | UP1226IOF1 |

### STANDARD MANOEUVRE



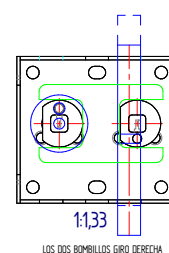
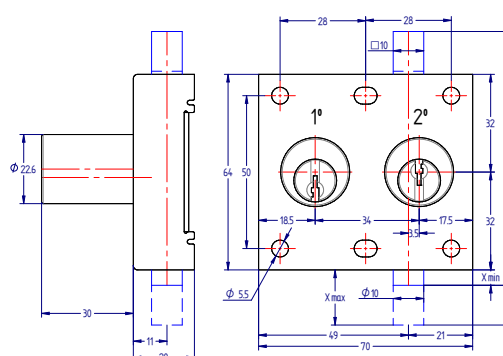
INITIAL POSITION  
Bolt retracted  
Key n° 1 free  
Key n° 2 trapped



POSITION AFTER MANOEUVRE Bolt extended  
Key n° 1 trapped  
Key n° 2 free

⊙ KEY FREE

⊗ KEY TRAPPED







# 1227

## BOLT LOCKS *LAUA series*

Lock for double manoeuvre, encoded to combine with other safety locks. Bolts work in both positions, extended and retracted. Key is free when bolt is extended. When bolt is retracted, key is trapped and the mechanism is locked. To start the sequence in standard manoeuvre, the key in the second lock has to be trapped.



| MANOEUVRE | BOLT   |       |        | CODE       |
|-----------|--------|-------|--------|------------|
|           | LENGHT | THROW | THREAD |            |
| STANDARD  | 18     | 13    | NO     | UP122710F1 |

### STANDARD MANOEUVRE



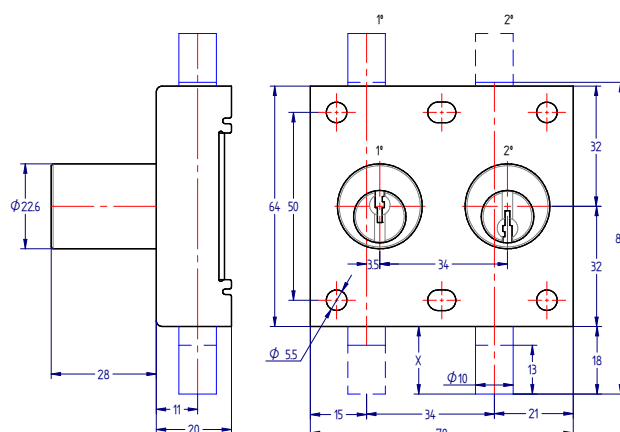
INITIAL POSITION  
Bolt n° 1 extended  
Bolt n° 2 retracted  
Key n° 1 trapped  
Key n° 2 free



POSITION AFTER MANOEUVRE  
Bolt n° 1 retracted  
Bolt n° 2 extended  
Key n° 1 trapped  
Key n° 2 free

○ KEY FREE

⊗ KEY TRAPPED



# 7223

## BOLT LOCKS *BOROBIL series*

Lock for double manoeuvre, encoded to combine with other safety locks. Bolt works in both positions, extended and retracted. Key is free when bolt is extended. When bolt is retracted, key is trapped and the mechanism is locked.



| MANOEUVRE | BOLT   |       |        | CODE        |
|-----------|--------|-------|--------|-------------|
|           | LENGHT | THROW | THREAD |             |
| STANDARD  | 18     | 13    | NO     | UT722310F0  |
| STANDARD  | 35     | 13    | NO     | UT722310F01 |

### STANDARD MANOEUVRE



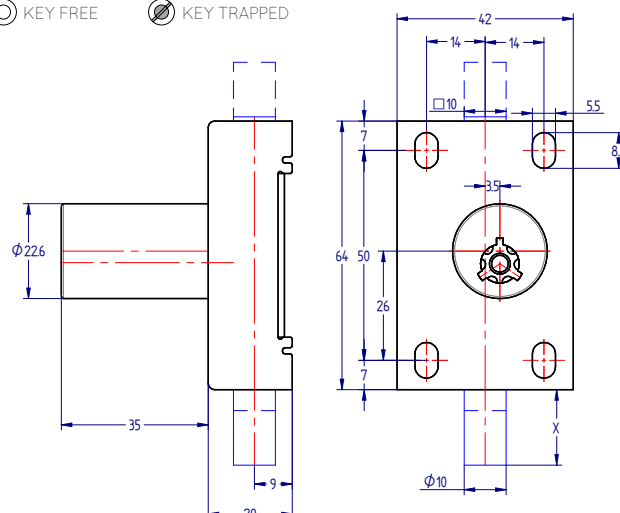
INITIAL POSITION  
Bolt extended  
Key free



POSITION AFTER MANOEUVRE  
Bolt retracted  
Key trapped

○ KEY FREE

⊗ KEY TRAPPED



## 7295

### BOLT LOCKS *BOROBIL* series

Lock for simple manoeuvre, encoded to combine with other safety locks. Bolt works only in extended position. Key is free when bolt is extended. When bolt is retracted, key is trapped and the mechanism is locked.



| MANOEUVRE | BOLT   |       |        | CODE      |
|-----------|--------|-------|--------|-----------|
|           | LENGHT | THROW | THREAD |           |
| STANDARD  | 18     | 13    | NO     | T729510F0 |

#### STANDARD MANOEUVRE



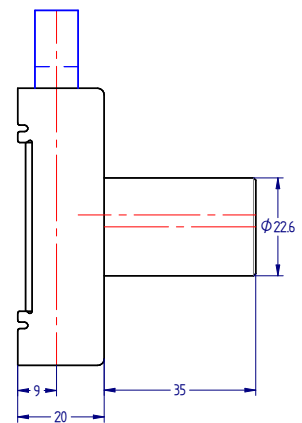
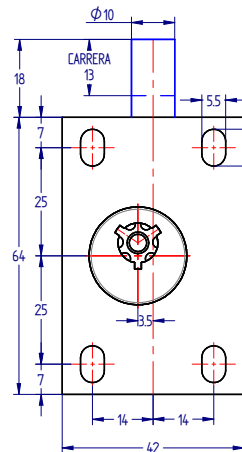
INITIAL POSITION  
Bolt extended  
Key free



POSITION AFTER  
MANOEUVRE  
Bolt retracted  
Key trapped

○ KEY FREE

◐ KEY TRAPPED



## 7201

### BOLT LOCKS *BOROBIL* series

Lock for double manoeuvre, encoded to combine with other safety locks. Bolt works in both positions, extended and retracted. Key is free when bolt is extended. When bolt is retracted, key is trapped and the mechanism is locked. When bolt is retracted the switch is activated.



| MANOEUVRE | BOLT   |       |        | CODE       |
|-----------|--------|-------|--------|------------|
|           | LENGHT | THROW | THREAD |            |
| STANDARD  | 18     | 13    | NO     | UT720110F0 |

#### STANDARD MANOEUVRE



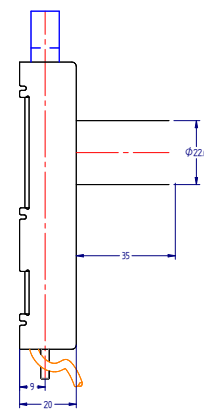
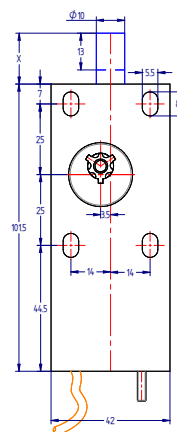
INITIAL POSITION  
Bolt extended  
Key free



POSITION AFTER  
MANOEUVRE  
Bolt retracted  
Key trapped

○ KEY FREE

◐ KEY TRAPPED



# 7206

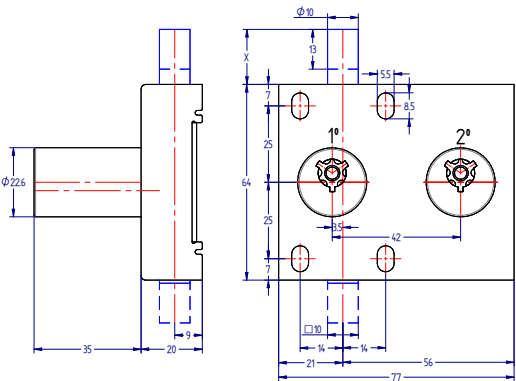
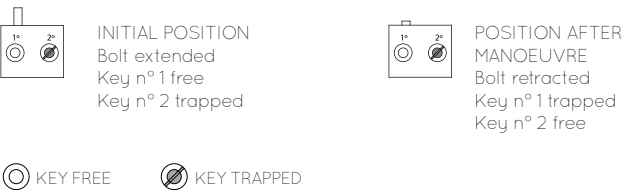
## BOLT LOCKS *BOROBIL* series

Lock for double manoeuvre, encoded to combine with other safety locks. Bolt works in both positions, extended and retracted. Key is free when bolt is extended. When bolt is retracted, key is trapped and the mechanism is locked. To start the sequence in standard manoeuvre, the key in the second lock has to be trapped.



| MANOEUVRE | BOLT   |       |        | CODE       |
|-----------|--------|-------|--------|------------|
|           | LENGHT | THROW | THREAD |            |
| STANDARD  | 18     | 13    | NO     | UT720610F1 |

**STANDARD MANOEUVRE**



# 7202

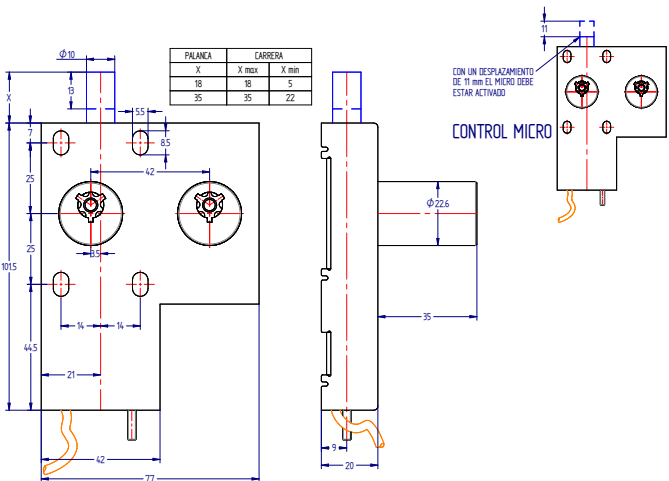
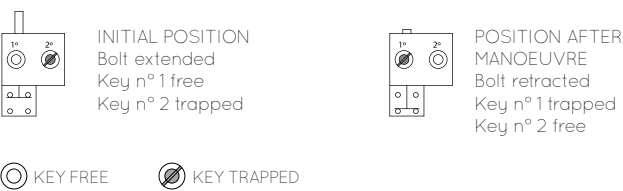
## BOLT LOCKS *BOROBIL* series

Lock for double manoeuvre, encoded to combine with other safety locks. Bolt works in both positions, extended and retracted. Key is free when bolt is extended. When bolt is retracted, key is trapped and the mechanism is locked. When bolt is retracted the switch is activated. To start the sequence in standard manoeuvre, the key in the second lock has to be trapped.



| MANOEUVRE | BOLT   |       |        | CODE       |
|-----------|--------|-------|--------|------------|
|           | LENGHT | THROW | THREAD |            |
| STANDARD  | 18     | 13    | NO     | UT72021101 |

**STANDARD MANOEUVRE**



## 7226

### BOLT LOCKS *BOROBIL* series

Lock for double manoeuvre, encoded to combine with other safety locks. Bolt works in both positions, extended and retracted. Key is free when bolt is extended. When bolt is retracted, key is trapped and the mechanism is locked. To start the sequence in standard manoeuvre, the key in the second lock has to be trapped.

| MANOEUVRE | BOLT   |       |        | CODE       |
|-----------|--------|-------|--------|------------|
|           | LENGHT | THROW | THREAD |            |
| STANDARD  | 18     | 13    | NO     | UT7226I001 |

#### STANDARD MANOEUVRE



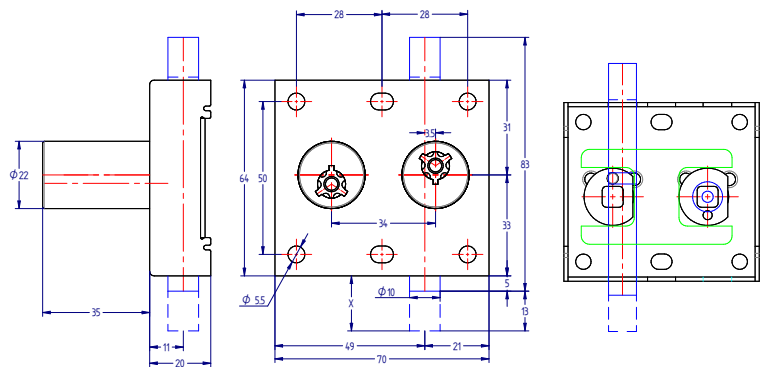
INITIAL POSITION  
Bolt retracted  
Key n° 1 free  
Key n° 2 trapped



POSITION AFTER MANOEUVRE  
Bolt extended  
Key n° 1 trapped  
Key n° 2 free

○ KEY FREE

● KEY TRAPPED



## 7208

### BOLT LOCKS *BOROBIL* series

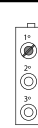
Lock for simple manoeuvre, encoded to combine with other safety locks. Bolt works only in extended position. Key is free when bolt is extended. When bolt is retracted, key is trapped and the mechanism is locked. To start the sequence in standard manoeuvre, the key in the second and in the third locks have to be trapped.

| MANOEUVRE        | BOLT   |       |        | CODE         |
|------------------|--------|-------|--------|--------------|
|                  | LENGHT | THROW | THREAD |              |
| STANDARD         | 18     | 13    | NO     | UT7208I0F1   |
| SPECIAL TYPE "A" | 18     | 13    | NO     | UT7208I0F10A |

#### STANDARD MANOEUVRE

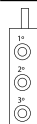


INITIAL POSITION Bolt extended  
Key n° 1 free  
Key n° 2 trapped  
Key n° 3 trapped

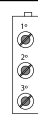


POSITION AFTER MANOEUVRE Bolt retracted  
Key n° 1 trapped  
Key n° 2 free  
Key n° 3 free

#### SPECIAL MANOEUVRE TYPE "A"



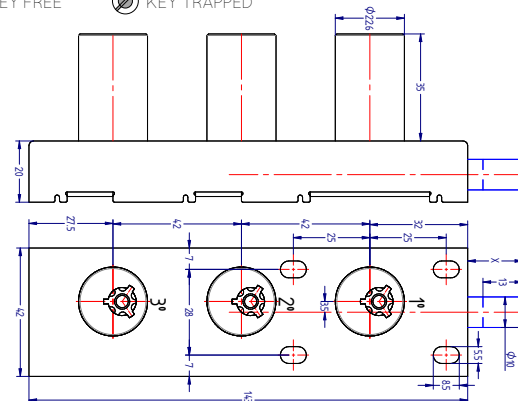
INITIAL POSITION  
Bolt extended  
Key n° 1 free  
Key n° 2 free  
Key n° 3 free



POSITION AFTER MANOEUVRE  
Bolt retracted  
Key n° 1 trapped  
Key n° 2 trapped  
Key n° 3 trapped

○ KEY FREE

● KEY TRAPPED





7207

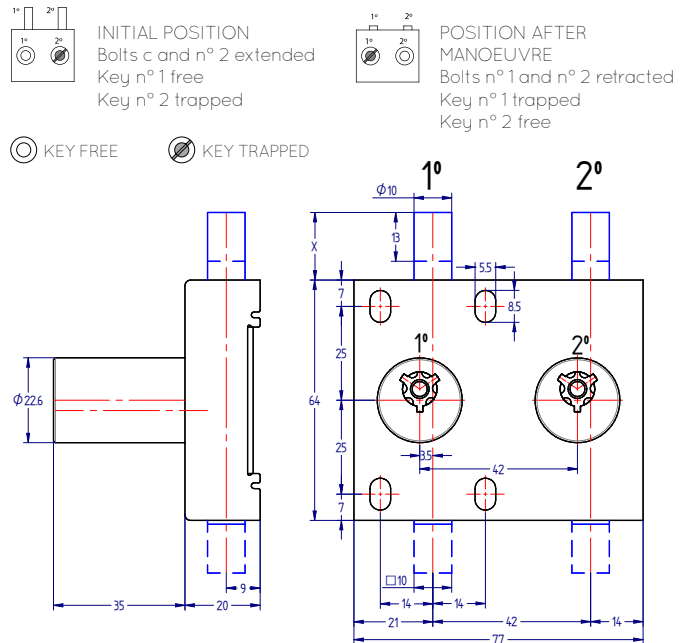
Lock for double manoeuvre, encoded to combine with other safety locks. Bolts work in both positions, extended and retracted. Key is free when bolt is extended. When bolt is retracted, key is trapped and the mechanism is locked. To start the sequence in standard manoeuvre, the key in the second lock has to be trapped.



## BOLT LOCKS *BOROBIL series*

| MANOEUVRE | BOLT   |       |        | CODE       |
|-----------|--------|-------|--------|------------|
|           | LENGHT | THROW | THREAD |            |
| STANDARD  | 18     | 13    | NO     | UT720710F1 |

## STANDARD MANOEUVRE



## 7227

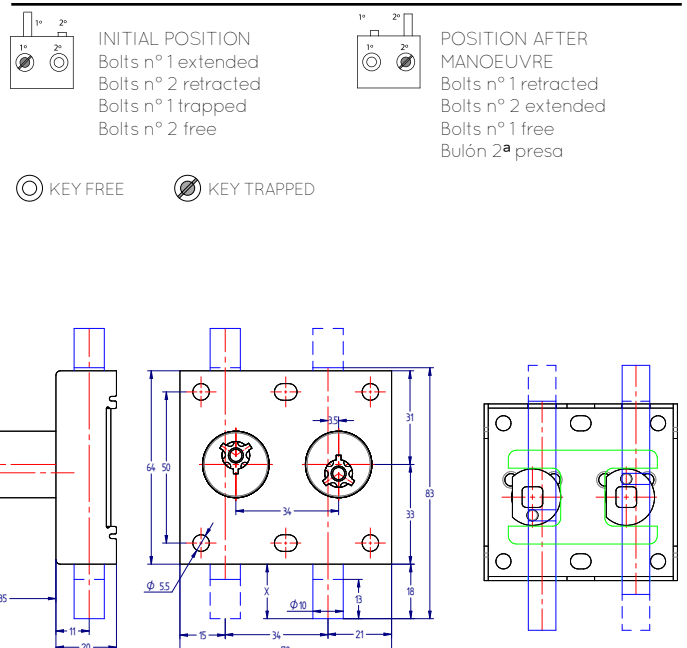
Lock for double manoeuvre, encoded to combine with other safety locks. Bolts work in both positions, extended and retracted. Key is free when bolt is extended. When bolt is retracted, key is trapped and the mechanism is locked. To start the sequence in standard manoeuvre, the key in the second lock has to be trapped.



## BOLT LOCKS *BOROBIL* series

| MANOEUVRE | BOLT   |       |        | CODE       |
|-----------|--------|-------|--------|------------|
|           | LENGHT | THROW | THREAD |            |
| STANDARD  | 18     | 13    | NO     | UT722710F1 |

## STANDARD MANOEUVRE





1329

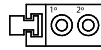
Lock for access to a cell. Encoded to combine with other safety locks. When the door is open, the key is trapped. To start the sequence in standard manoeuvre, the key in the second lock has to be trapped.



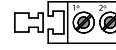
## ACCESS LOCKING *LAUA series*

| MANOEUVRE        | CYLINDER DIMENSION | CODE        |
|------------------|--------------------|-------------|
| STANDARD         | Ø 23×30            | UP1329I001  |
| SPECIAL TYPE "A" | Ø 23×30            | UP1329I0020 |

## STANDARD MANOEUVRE

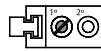


LOCKED POSITION  
Striker plate trapped  
Key n° 1 free  
Key n° 2 free

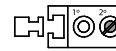


UNLOCKED POSITION  
Striker plate free  
Key n° 1 trapped  
Key n° 2 trapped

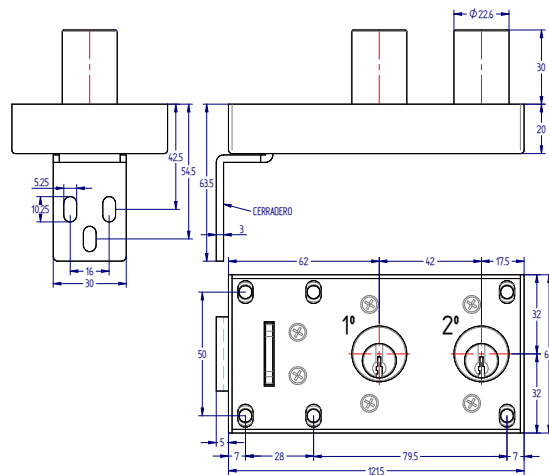
## SPECIAL MANOEUVRE TYPE “A”



LOCKED POSITION  
Striker plate trapped  
Key n° 1 trapped  
Key n° 2 free



UNLOCKED POSITION  
Striker plate free  
Key n° 1 free  
Key n° 2 trapped



1395

Lock for access to a cell. Encoded to combine with other safety locks. When the door is open, the key is trapped. To start the sequence in standard manoeuvre, the key in the second lock has to be trapped.



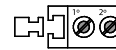
## ACCESS LOCKING *LAUA series*

| MANOEUVRE | CYLINDER DIMENSION | CODE       |
|-----------|--------------------|------------|
| STANDARD  | Ø 23×25,5          | UPI395I001 |

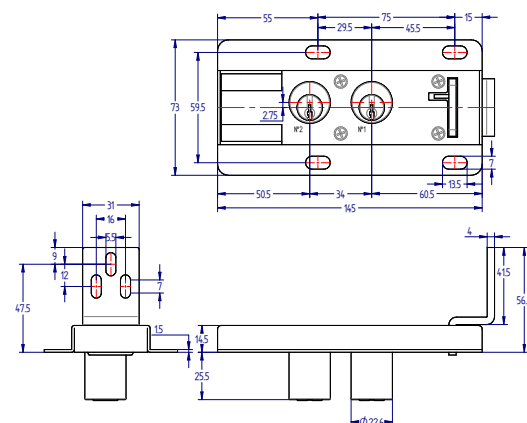
## STANDARD MANOEUVRE



LOCKED POSITION  
Striker plate trapped  
Key n° 1 free  
Key n° 2 free



UNLOCKED POSITION  
Striker plate free  
Key n° 1 trapped  
Key n° 2 trapped



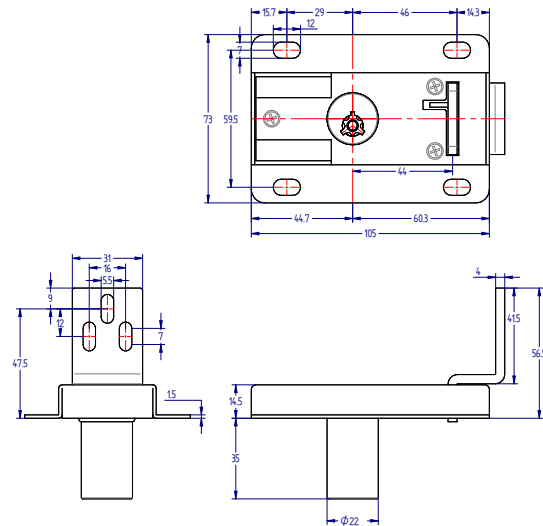
# 7394

Lock for access to a cell. Encoded to combine with other safety locks. When the door is open, the key is trapped.



## ACCESS LOCKING *BOROBIL* series

| MANOEUVRE | CYLINDER DIMENSION | CODE       |
|-----------|--------------------|------------|
| STANDARD  | Ø 22x35            | UT7394I000 |



# 7328

Lock for access to a cell. Encoded to combine with other safety locks. When the door is open, the key is trapped.



## ACCESS LOCKING *BOROBIL* series

| MANOEUVRE | CYLINDER DIMENSION | CODE       |
|-----------|--------------------|------------|
| STANDARD  | Ø 22x35            | UT7328I000 |

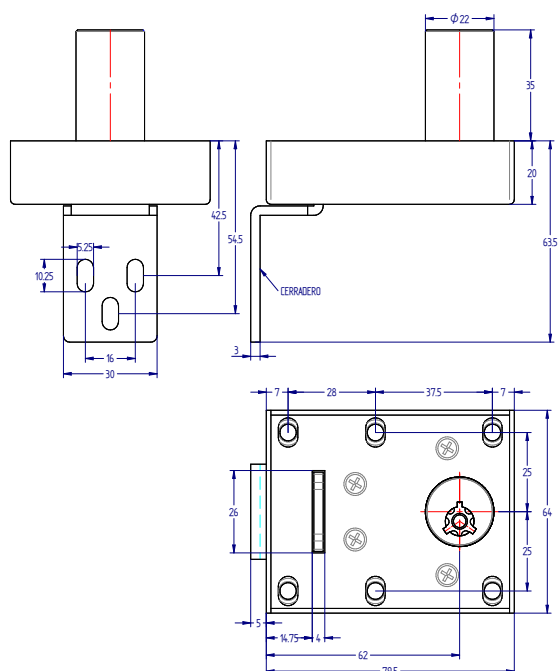
### STANDARD MANOEUVRE



INITIAL POSITION  
Striker plate trapped  
Key free



POSITION AFTER  
MANOEUVRE  
Striker plate free  
Key trapped





7329

Lock for access to a cell. Encoded to combine with other safety locks. When the door is open, the key is trapped. To start the sequence in standard manoeuvre, the key in the second lock has to be trapped.



## ACCESS LOCKING *BOROBIL series*

| MANOEUVRE | CYLINDER DIMENSION | CODE       |
|-----------|--------------------|------------|
| STANDARD  | Ø 22x35            | UT7329I001 |

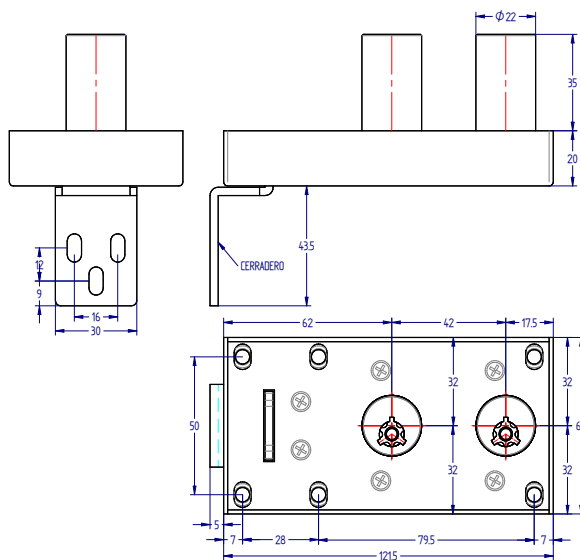
## STANDARD MANOEUVRE



LOCKED POSITION  
Striker plate trapped  
Key n° 1 free  
Key n° 2 free



UNLOCKED POSITION  
Striker plate free  
Key n° 1 trapped  
Key n° 2 trapped



7395

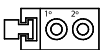
Lock for access to a cell. Encoded to combine with other safety locks. When the door is open, the key is trapped. To start the sequence in standard manoeuvre, the key in the second lock has to be trapped.



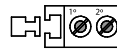
## ACCESS LOCKING *BOROBIL series*

| MANOEUVRE | CYLINDER DIMENSION | CODE       |
|-----------|--------------------|------------|
| STANDARD  | Ø 22x35            | UT7395I000 |

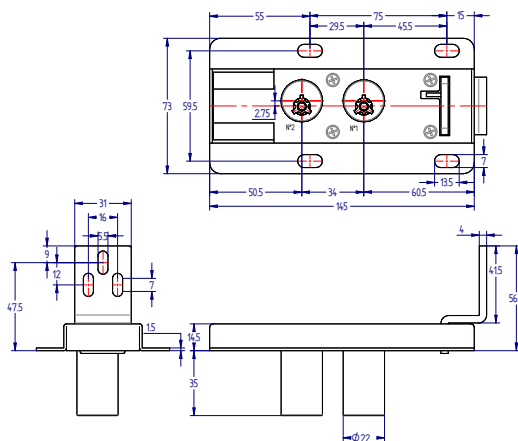
## STANDARD MANOEUVRE

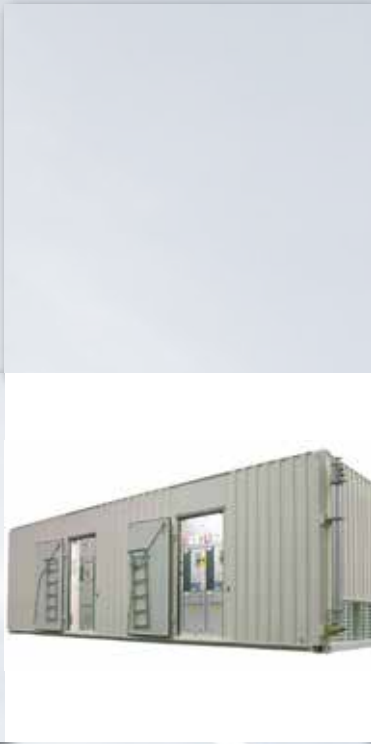


LOCKED POSITION  
Striker plate trapped  
Key n° 1 free  
Key n° 2 free



UNLOCKED POSITION  
Striker plate free  
Key n° 1 trapped  
Key n° 2 trapped





# KEY MANAGEMENT

LAUA series  
BOROBIL series



# 1403

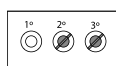
Key interchanging box with 3 cylinders, 1 free key maintains 2 keys trapped.



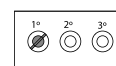
## KEY MANAGEMENT LAUA series

| REF  | MANOEUVRE | N° OF CYLINDERS | A           | CODE       |
|------|-----------|-----------------|-------------|------------|
| 1403 | STANDARD  | 3               | 118         | UP1403I000 |
| 1404 | STANDARD  | 4               | 152         | UP1404I000 |
| 1405 | STANDARD  | 5               | 186         | UP1405I000 |
| 140X | STANDARD  | X               | A (X-1) +34 | UP140XI000 |

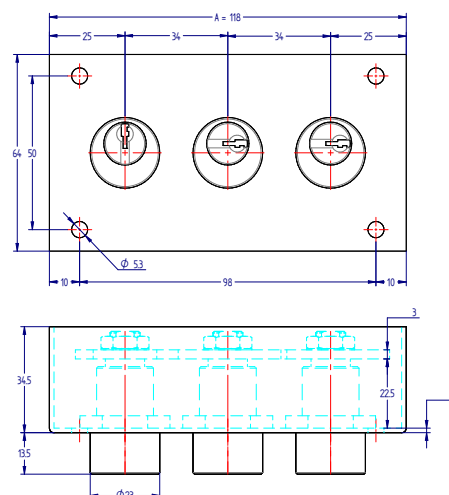
### STANDARD MANOEUVRE



INITIAL POSITION  
Key n° 1 free  
Key n° 2 and n° 3 trapped



POSITION AFTER  
MANOEUVRE  
Key n° 1 trapped  
Key n° 2 and n° 3 free



# 1406

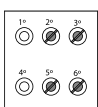
Key interchanging box with 6 cylinders, 2 lines of 3 cylinders each; 1 free key maintains 2 keys trapped per line.



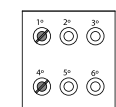
## KEY MANAGEMENT LAUA series

| REF  | MANOEUVRE | N° OF CYLINDERS | A   | CODE       |
|------|-----------|-----------------|-----|------------|
| 1406 | STANDARD  | 3x2             | 118 | UP1406I002 |

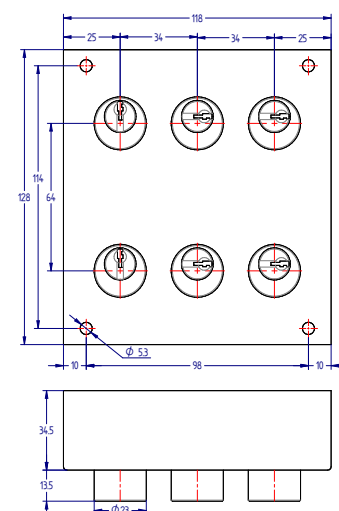
### STANDARD MANOEUVRE



INITIAL POSITION  
Key n° 1 free  
Key n° 2 and n° 3 trapped  
Key n° 4 free  
Key n° 5 and n° 6 trapped



POSITION AFTER  
MANOEUVRE  
Key n° 1 trapped  
Key n° 2 and n° 3 free  
Key n° 4 trapped  
Key n° 5 and n° 6 free



# 7403

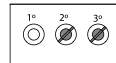
## KEY MANAGEMENT *BOROBIL series*

Key interchanging box with 3 cylinders; 1 free key maintains 2 keys trapped.

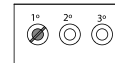


| REF  | MANOEUVRE | N° OF CYLINDERS | A           | CODE       |
|------|-----------|-----------------|-------------|------------|
| 7403 | STANDARD  | 3               | 118         | UT7403I000 |
| 7404 | STANDARD  | 4               | 152         | UT7404I000 |
| 7405 | STANDARD  | 5               | 186         | UT7405I000 |
| 740X | STANDARD  | X               | A (X-1) +34 | UT740XI000 |

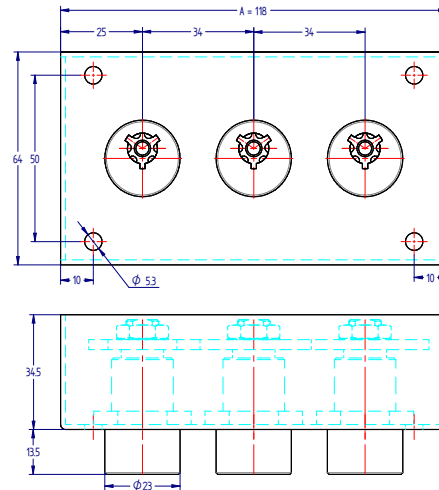
### STANDARD MANOEUVRE



INITIAL POSITION  
Key n° 1 free  
Key n° 2 and n° 3 trapped



POSITION AFTER  
MANOEUVRE  
Key n° 1 trapped  
Key n° 2 and n° 3 free



# 7406

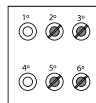
## KEY MANAGEMENT *BOROBIL series*

Key interchanging box with 6 cylinders, 2 lines of 3 cylinders each; 1 free key maintains 2 keys trapped per line.

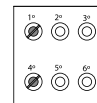


| REF  | MANOEUVRE | N° OF CYLINDERS | A   | CODE       |
|------|-----------|-----------------|-----|------------|
| 7406 | STANDARD  | 3x2             | 118 | UT7406I002 |

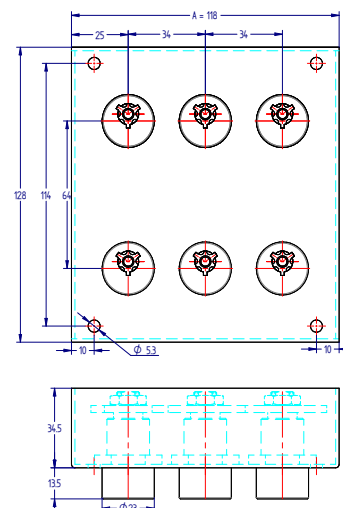
### STANDARD MANOEUVRE



INITIAL POSITION  
Key n° 1 free  
Key n° 2 and n° 3 trapped  
Key n° 4 free  
Key n° 5 and n° 6 trapped



POSITION AFTER  
MANOEUVRE  
Key n° 1 trapped  
Key n° 2 and n° 3 free  
Key n° 4 trapped  
Key n° 5 and n° 6 free







# SOLENOID CONTROLLED LOCKS

LAUA series  
BOROBIL series



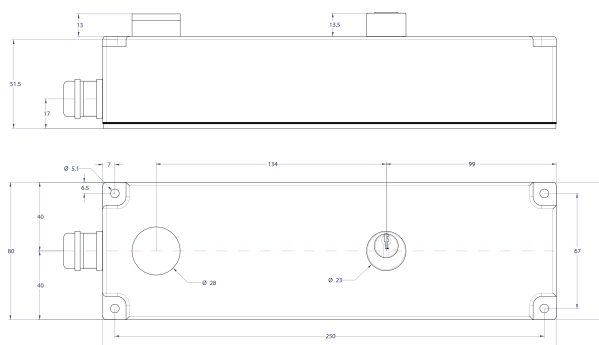
## 1500

### SOLENOID CONTROLLED LOCKS *LAUA series*

Electro mechanical lock controled by a solenoid wich allow the standard manouvre (solenoid energised = key free).



| MANOEUVRE | VOLTAGE | CODE       |
|-----------|---------|------------|
| STANDARD  | 110 v.  | UP1500I011 |
| STANDARD  | 220 v.  | UP1500I021 |



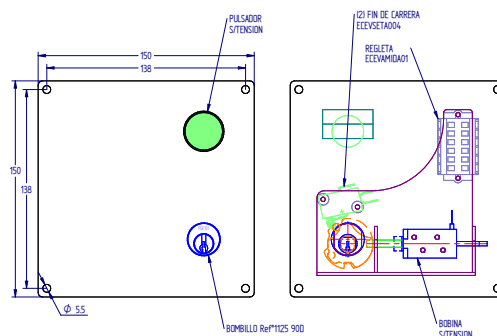
## 1501

### SOLENOID CONTROLLED LOCKS *LAUA series*

Electro mechanical lock controled by a solenoid wich allow the standard manouvre (solenoid energised = key free). The state of the lock is controlled by a switch.



| MANOEUVRE | VOLTAGE | CODE        |
|-----------|---------|-------------|
| STANDARD  | 110 v.  | UP1501I011  |
| STANDARD  | 220 v.  | UP1501I011A |



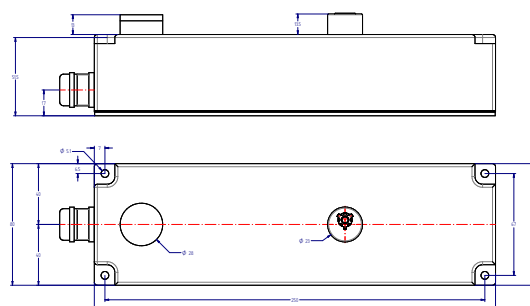
## 7500

### SOLENOID CONTROLLED LOCKS *BOROBIL series*

Electro mechanical lock controled by a solenoid wich allow the standard manouvre (solenoid energised = key free).



| MANOEUVRE | VOLTAGE | CODE       |
|-----------|---------|------------|
| STANDARD  | 110 v.  | UT7500I011 |
| STANDARD  | 220 v.  | UT7500I021 |



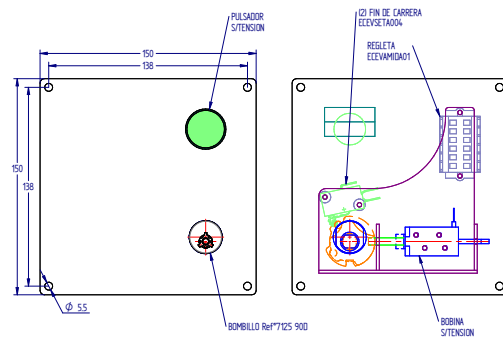
# 7501

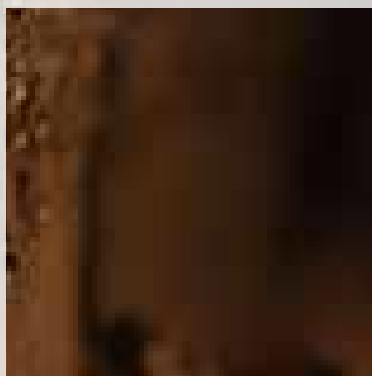
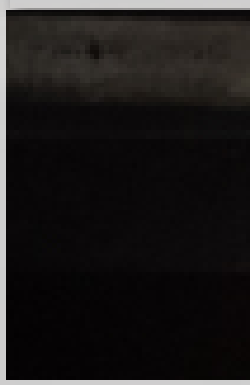
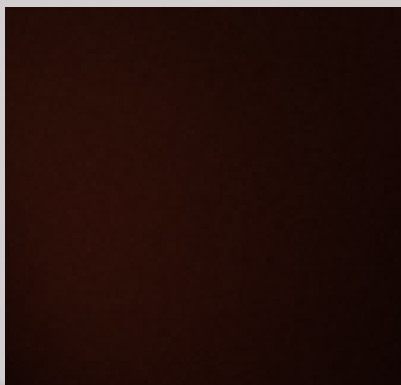
## SOLENOID CONTROLLED LOCKS *BOROBIL series*

Electro mechanical lock controlled by a solenoid which allow the standard manouvre (solenoid energised = key free). The state of the lock is controlled by a switch.



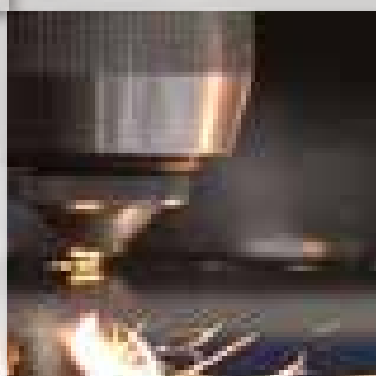
| MANOEUVRE | VOLTAGE | CODE        |
|-----------|---------|-------------|
| STANDARD  | 110 v.  | UT7501I011  |
| STANDARD  | 220 v.  | UT7501I011A |







## MISCELLANEOUS

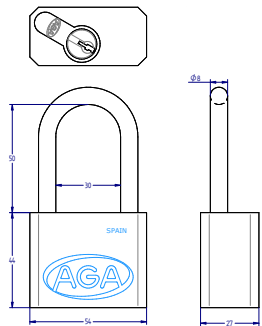


# 1601

## MISCELLANEOUS LAUA series

Padlock for an access locking encoded to combine with other safety locks. When the padlock is open, the key is trapped.

| MANOEUVRE | CODE      |
|-----------|-----------|
| STANDARD  | P1601C000 |



# 8228

## MISCELLANEOUS

Lock for double manoeuvre. Bolt works in both positions, extended and retracted. When bolt is retracted the switch is activated. To start the sequence in standard manoeuvre, the padlocks have to be operated.

| MANOEUVRE | CODE   |
|-----------|--------|
| STANDARD  | V82280 |

### STANDARD MANOEUVRE



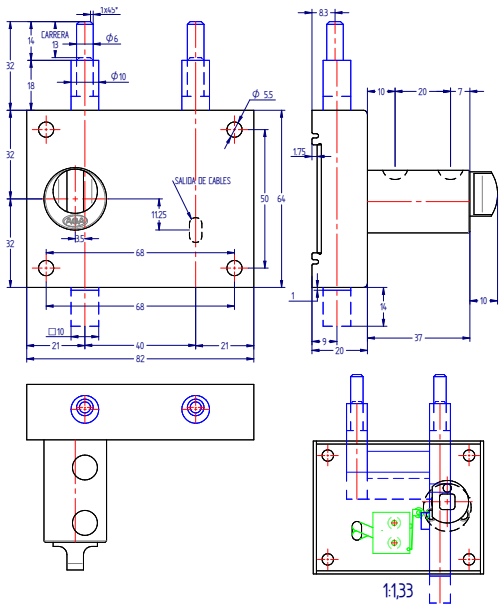
KEY FREE

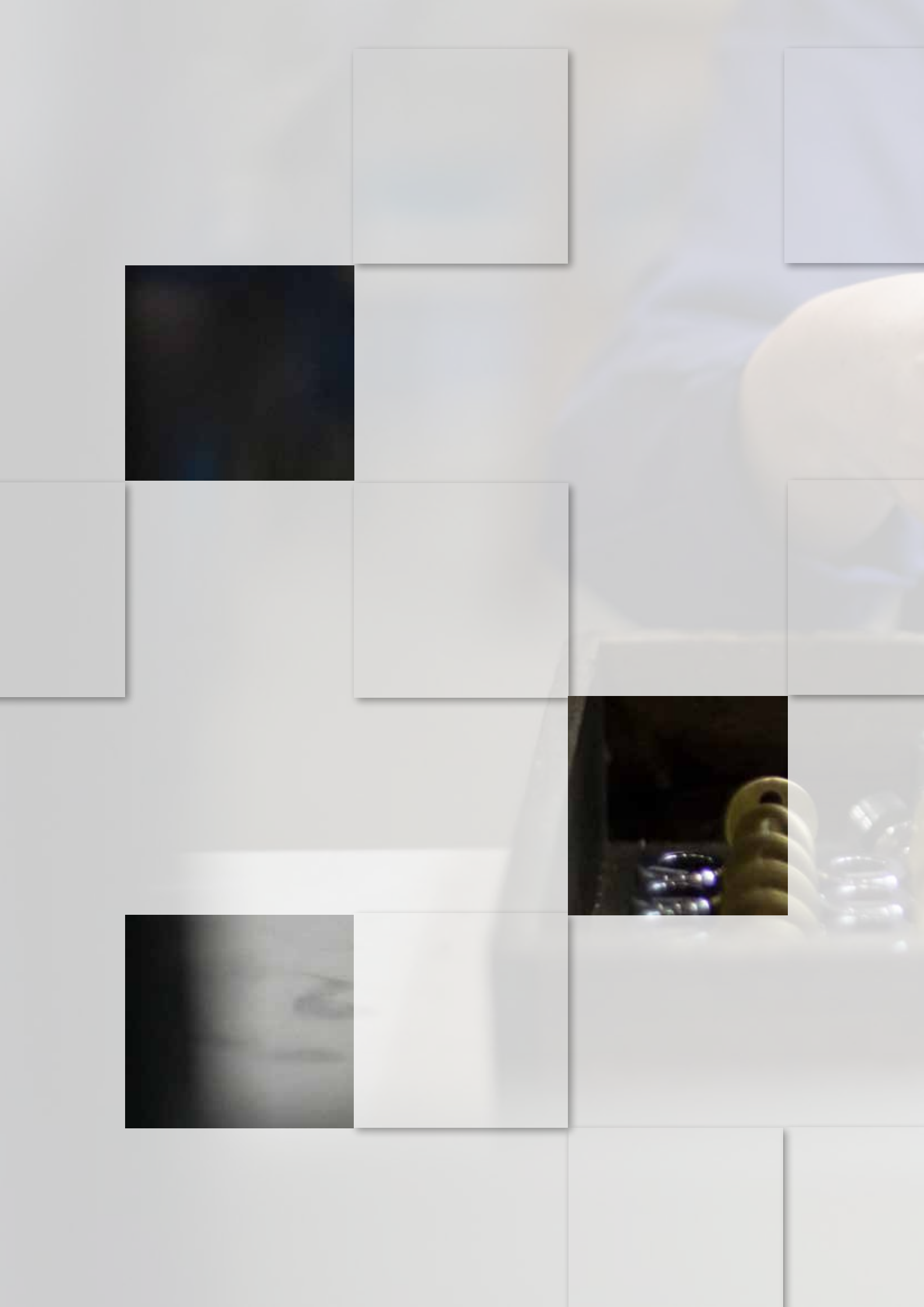


KEY TRAPPED

INITIAL POSITION  
Bolts extended  
Padlocks in

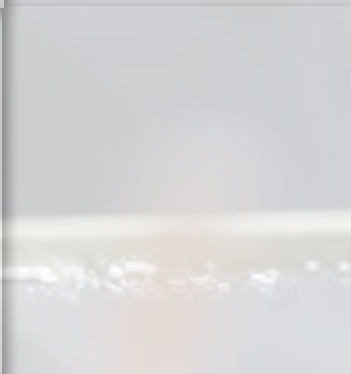
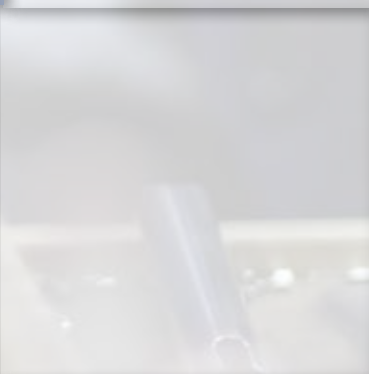
POSITION AFTER  
MANOEUVRE  
Bolts retracted  
Padlocks out





# KEYS

LAUA series  
BOROBIL series



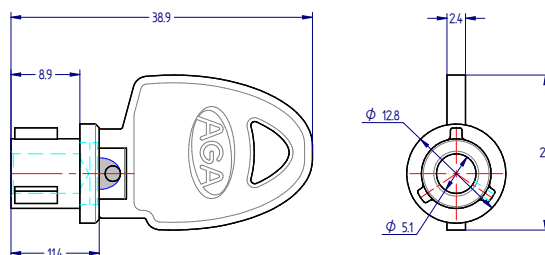
# AGA 7 T

KEYS *BOROBIL series*

Tubular brass key.



|                           |              |
|---------------------------|--------------|
| <b>MATERIAL</b>           | BRASS        |
| <b>N° OF COMBINATIONS</b> | 97.081       |
| <b>BREAKING TORQUE</b>    | 12,5 N-m     |
| <b>WEIGHT</b>             | 14 grs.      |
| <b>CODE</b>               | YTAG07Y2A300 |





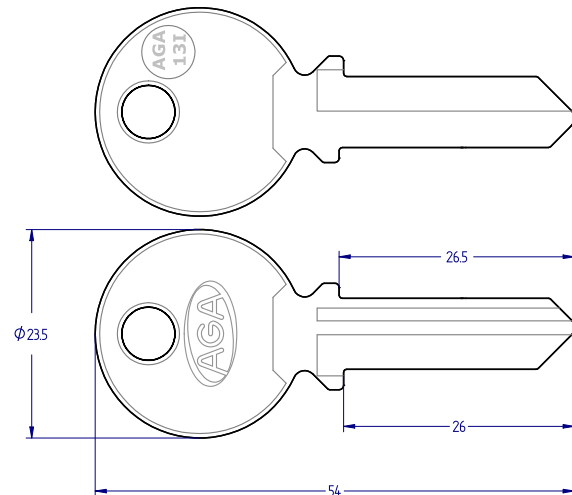
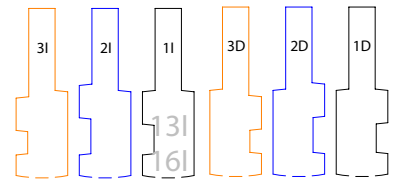
## AGA 13

### KEYS LAUA series

Standard flat brass key.

|                           |         |
|---------------------------|---------|
| <b>MATERIAL</b>           | BRASS   |
| <b>N° OF COMBINATIONS</b> | 15.600  |
| <b>BREAKING TORQUE</b>    | 6,5 N-m |
| <b>WEIGHT</b>             | 12 grs. |

#### KEY PROFILE



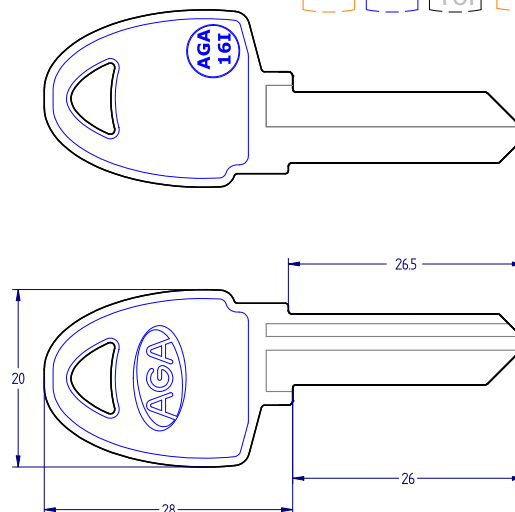
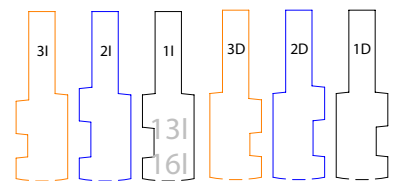
## AGA 16

### KEYS LAUA series

Standard flat brass key.

|                           |         |
|---------------------------|---------|
| <b>MATERIAL</b>           | BRASS   |
| <b>N° OF COMBINATIONS</b> | 15.600  |
| <b>BREAKING TORQUE</b>    | 6 N-m   |
| <b>WEIGHT</b>             | 10 grs. |

#### KEY PROFILE





LOCKSMITH INDUSTRY

[www.aga.es](http://www.aga.es)



LOCKSMITH INDUSTRY

**Talleres AGA S.A.**  
Notario Etxagibel, 6  
20500 Arrasate-Mondragón (Gipuzkoa) Spain  
Telf. 943 790 922 - Fax. 943 790 976  
industria@aga.es - export@aga.es  
[www.aga.es](http://www.aga.es)