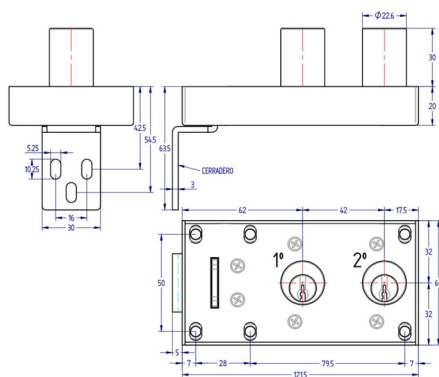
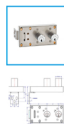


[Home](#) > [Industry Energy transformation](#) > [Cell locks](#) > [Laua series cell lock](#) > [1329 Access Locking, Laua Series](#)



## 1329 Access Locking, Laua Series

Lock for access to a cell. Encoded to combine with other safety locks. When the door is open, the key is trapped. To start the sequence in standard manoeuvre, the key in the second lock has to be trapped.

MANOEUVRE	CYLINDER DIMENSION	CODE
STANDARD	Ø23x30	UP1329I001
SPECIAL TYPE «A»	Ø23x30	UP1329I002

## STANDARD MANOEUVRE

LOCKED POSITION	UNLOCKED POSITION
 <p>Striker plate trapped</p> <p>Key n° 1 free</p> <p>Key n° 2 free</p>	 <p>Striker plate free</p> <p>Key n° 1 trapped</p> <p>Key n° 2 trapped</p>

### SPECIAL MANOEUVRE TYPE "A"

	LOCKED POSITION		UNLOCKED POSITION
	<p>Striker plate trapped</p> <p>Key n° 1 trapped</p> <p>Key n° 2 free</p>		<p>Striker plate free</p> <p>Key n° 1 free</p> <p>Key n° 2 trapped</p>



Categories: Cell locks, Industry Energy transformation, Laua series cell lock