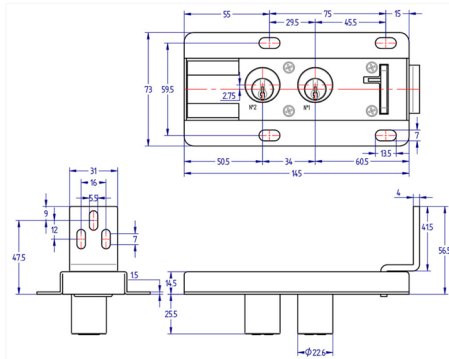




Home > Industry Energy transformation > Cell locks > Laua series cell lock > 1395 Acces Locking, Laua Series





1395 Acces Locking, Laua Series

Lock for access to a cell. Encoded to combine with other safety locks. When the door is open, the key is trapped. To start the sequence in standard manoeuvre, the key in the second lock has to be trapped.

MANOEUVRE	CYLINDER DIMENSION	CODE
STANDARD	Ø23x25,5	UPI1395I001
SPECIAL TYPE "A"	Ø23x25,5	UPI1395I0020

STANDARD MANOEUVRE

LOCKED POSITION	UNLOCKED POSITION
 Striker plate trapped Key nº 1 free Key nº 2 free	 Striker plate free Key nº 1 trapped Key nº 2 trapped

SPECIAL MANOEUVRE TYPE "A"

LOCKED POSITION	UNLOCKED POSITION
 Striker plate trapped Key nº 1 trapped Key nº 2 free	 Striker plate free Key nº 1 free Key nº 2 trapped



Categories: [Cell locks](#), [Industry Energy transformation](#), [Laua series cell lock](#)