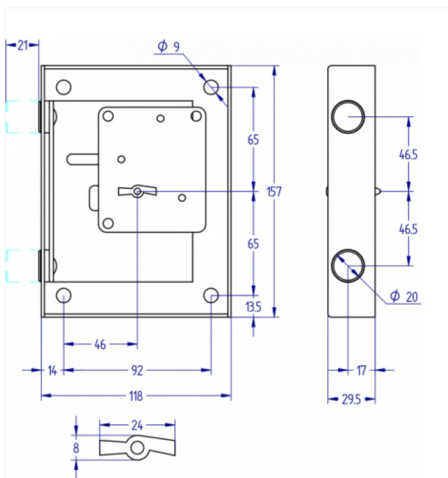


Home > High Security Industry > Security locks > Drag safety locks > 243 Dragging System Lock



243 Dragging System Lock

Blocking lock with 21mm bolt throw, turning 300°, and 2 blocking bolts. Key retained when in open position.

- AGA supplies as a standard the lock with asymmetrical profile and 2 keys AGA-9G.
- Different length of key pins available.
- Locks keyed alike option available.
- Double intervention lock option available, opening the lock in 2 steps using 2 different one bit keys.

TYPE OF LOCK	MECHANICAL
LOCK SYSTEM	BLOCKING
N° OF COMBINATIONS	500.000
POSSIBILITY OF MASTERKEY	NO
FINISH	ZINC PLATED
WEIGHT (grs.)	1.070

Categories: [Drag safety locks](#), [High Security Industry](#), [Security locks](#)