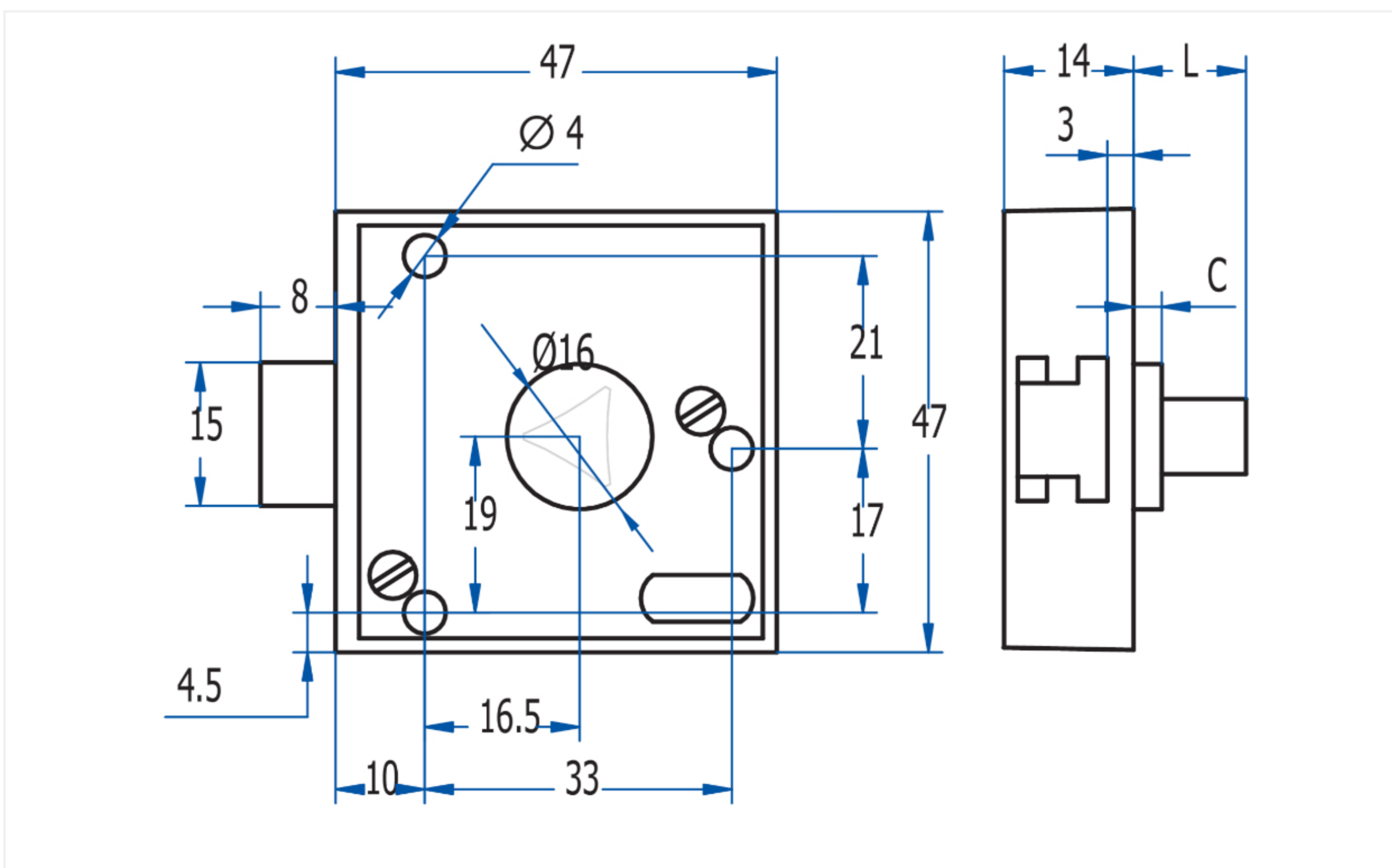
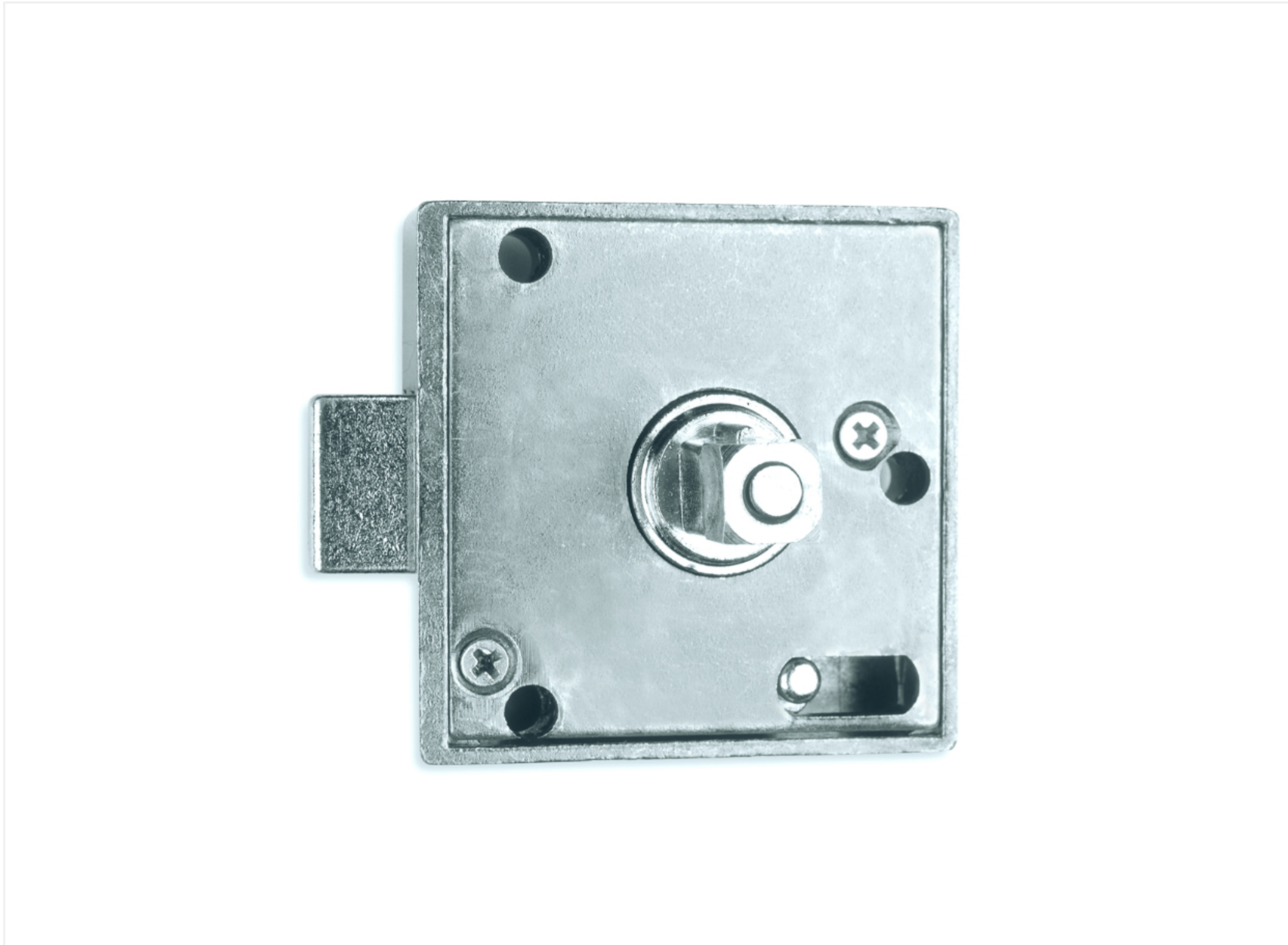
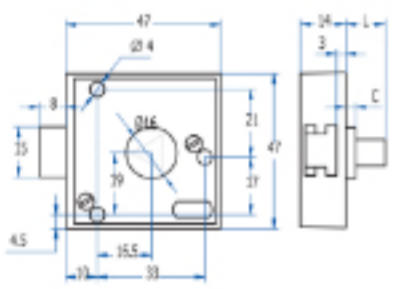


Home > General Industry > Locking systems > Latches and locks > Various > [Various Superimposing Pin Push 598](#)



Various Superimposing Pin Push 598

Superimposing pin push latch that could be used for different door thickness. The door is closed by pushing it, it is not necessary to use the key.

KEY FORM	Square 8 mm. Free turn
MATERIAL	Zamak
FINISH	Zinc plated
FEATURES	L = 20 mm / C = 1 mm
WEIGHT(grs)	184
ACCESORIES	Escutcheon
KEY	3018CC*

Categories: [General Industry](#), [Latches and locks](#), [Locking systems](#), [Various](#)